

Landmarks Pharmacy News

March 2018

Do you know by last month 10,000 cases: Flu outbreak in N.J. and it continues to surge

Have you taken your flu shot?

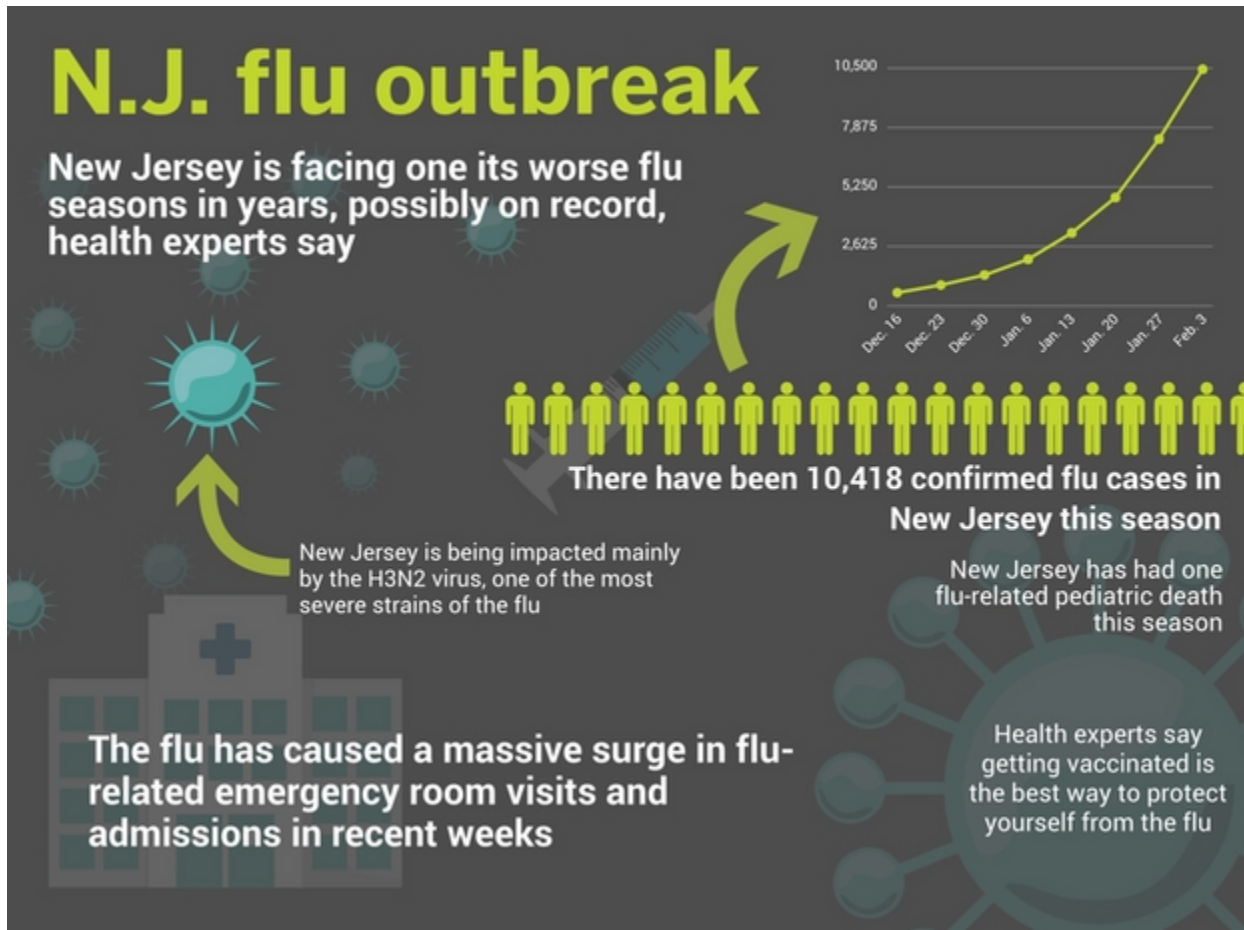
Look For Symptoms –Contact Landmark Vaccination Pharmacist



Flu symptoms are usually more **severe** than cold symptoms and come on quickly. Symptoms of flu include **sore** throat, fever, headache, muscle aches and soreness, congestion, and cough. Swine flu in particular is also associated with vomiting and diarrhea.

The flu is [continuing to spread rapidly](#) in New Jersey, with 3,000 additional cases reported in the state in the past week, pushing the total to more than 10,000 for the season, according to the [latest statistics](#) from the New Jersey Department of Health.

One [pediatric death](#) has also occurred from a flu-related illness this season in New Jersey. So how long can this go on? According to health officials, it's unclear when the tide will turn. Influenza is a capricious brute, and health officials say it's impossible to predict its future patterns. However, the state Department of Health says "it is likely there will be significant flu activity for many weeks to come."



Pediatric & Geriatric Population at Higher Risks

Do not allow your child to be a casualty

Contact Our Clinical Pharmacist to Learn about Flu Shots & Vaccination